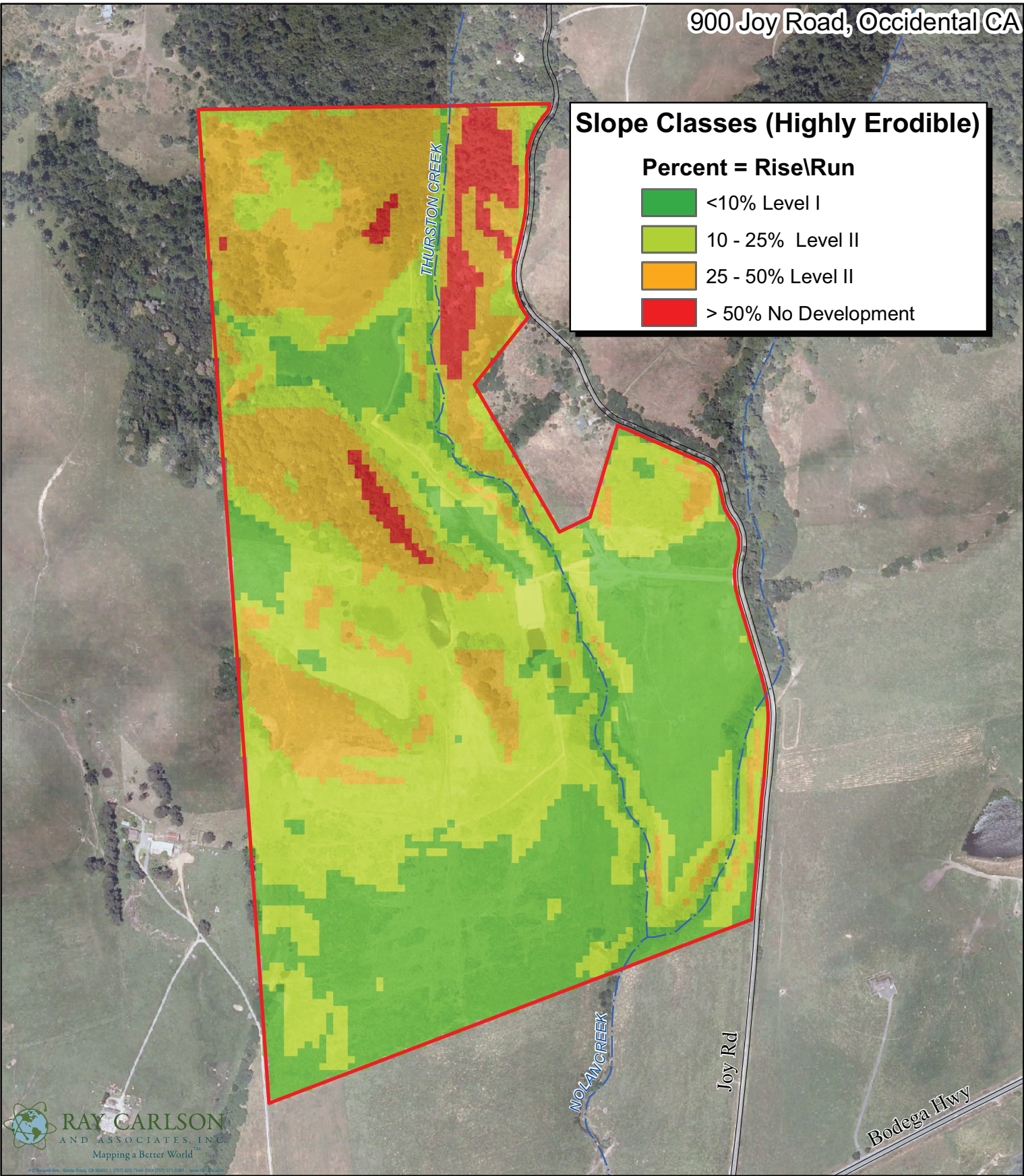


Slope Classes (Highly Erodible)

Percent = Rise\Run

- <10% Level I
- 10 - 25% Level II
- 25 - 50% Level II
- > 50% No Development



NOTE: THIS MAP WAS CREATED BY RAY CARLSON & ASSOCIATES, INC. STREET AND ASSESSOR PARCEL DATA PROVIDED BY COUNTY OF SONOMA, SUBJECT TO STANDARD CONDITIONS.

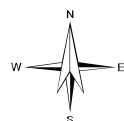
ANY BOUNDARY SHOWN IS STRICTLY FOR REFERENCE PURPOSES ONLY. BOUNDARY LINES SHOWN HAVE NOT BEEN VERIFIED AND/OR SURVEYED. NO LIABILITY IS ASSUMED OR IMPLIED FOR THE LOCATION OF BOUNDARY LINES OR THE ACCURACY OF ACREAGE FIGURES HEREON. USE OF THIS PRODUCT IS COVERED BY COPYRIGHT LAWS.

RAY CARLSON & ASSOCIATES, INC. IS TO BE HELD HARMLESS FOR ANY AND ALL DISCREPANCIES OF DISTANCE AND GRAPHIC DISTORTION RELATING TO THE USE AND DEPENDENCE UPON THIS REPRESENTATION.

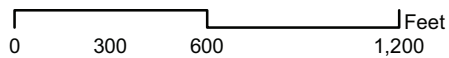
ORTHOPHOTOGRAPHY IS PER NAIR FLOWN 2010.

Vineyard development levels per Sonoma County Ordinance 5819. Slope analysis and 10-ft contours by Ray Carlson & Associates, Inc. using USGS National Elevation Data from Image Peak Systems Corp.

THIS MAP IS AN ENLARGEMENT OF SMALLER-SCALE DATASETS.



1 inch = 600 feet



karl@bundesen.com
707-769-7100